



Wildog Accessories

Installation instruction

PRODUCT DESCRIPTION:

- Toyota Hilux 2021 + Raider Front



PRODUCT SAFETY & LEGAL DISCLAIMER

• IMPORTANT READ ALL INSTRUCTIONS CAREFULLY BEFORE INSTALLING. FAILURE TO DO SO MAY CAUSE PERSONAL INJURY OR DAMAGE TO PRODUCT AND/OR PROPERTY.

- Review the product package and contents prior to beginning the installation.

Take care when opening the packaging and removing items. If a return is needed you will want to return the product in its original packaging if possible.

- This instruction guide is provided as a GENERAL installation guide, some vehicles vary dimensionally and may require additional steps.
- Test fit the product on the vehicle prior to any third party modifications and or finishing. The manufacturer and/or distributors do not accept responsibility for third party charges, labour and or third part replacement modifications. Some modifications may void the factory warranty.
- Exercise due-diligence when installing this product. The manufacturer and distributors of this product do not accept any responsibility for vehicle damage or personal injury resulting from the installation of this product. Careless installation and operation can result in serious injury or equipment damage.
- This product is for general off-road use. All liability for installation and use rests with the owner/operator.

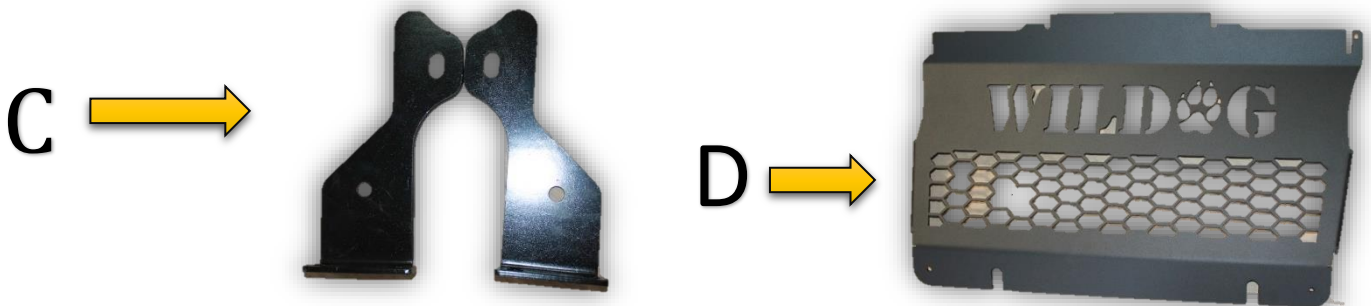
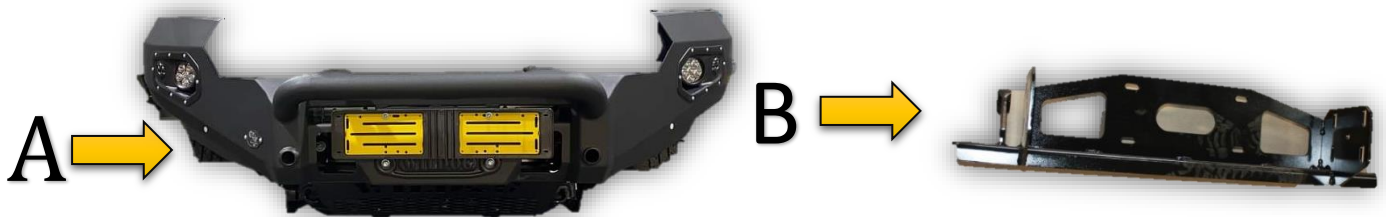


Wildog Accessories

Installation instruction

PARTS INCLUDED IN THE LIST:

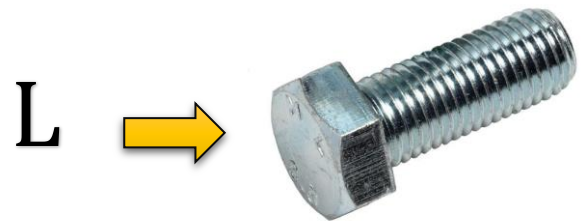
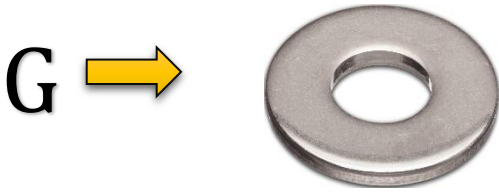
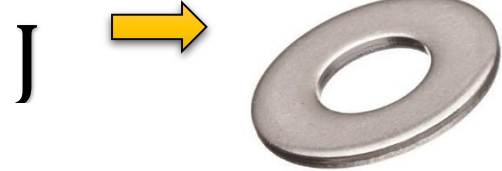
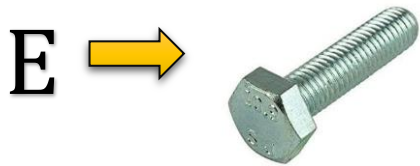
A	Complete & assembled bumper	1
B	Winch plate	1
C	Chassis Stiffeners	2
D	Radiator plate	1
E	M10 x 40 Hex Bolts	2
F	M10 x 80 Hex Bolts	2
G	M10 x 25 x 3 Semi Fender Washers	8
H	M10 Nyloc Nuts	4
I	M12 x 40 x 1.5 Hex Bolts	2
J	M12 x 30 x 3 Semi Fender Washers	34
K	M12 Nyloc Nuts	16
L	M12 x 40 x 1.75 Hex Bolts	16
M	Sets of light connectors	2





Wildog Accessories

Installation instruction





Wildog Accessories

Installation instruction

Please insure that all parts and fasteners are accounted for before starting the fitment, if any parts are not included please give us a call on [065 100 62525](tel:06510062525) or [074 227 1524](tel:0742271524) and we will gladly assist you.

ESTIMATED TIME FOR INSTALLATION:

3-4 hours

Please follow the necessary steps to complete your fitment.

BEFORE

AFTER



STEP 1

Remove the following from the vehicle:

- Plastic bumper
- Standard grill.



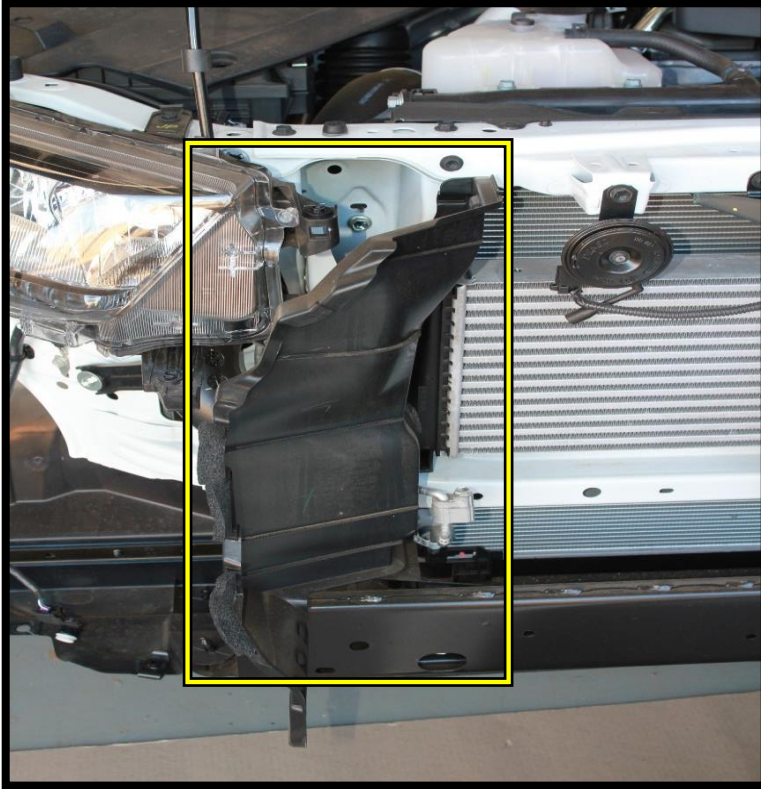


Wildog Accessories

Installation instruction

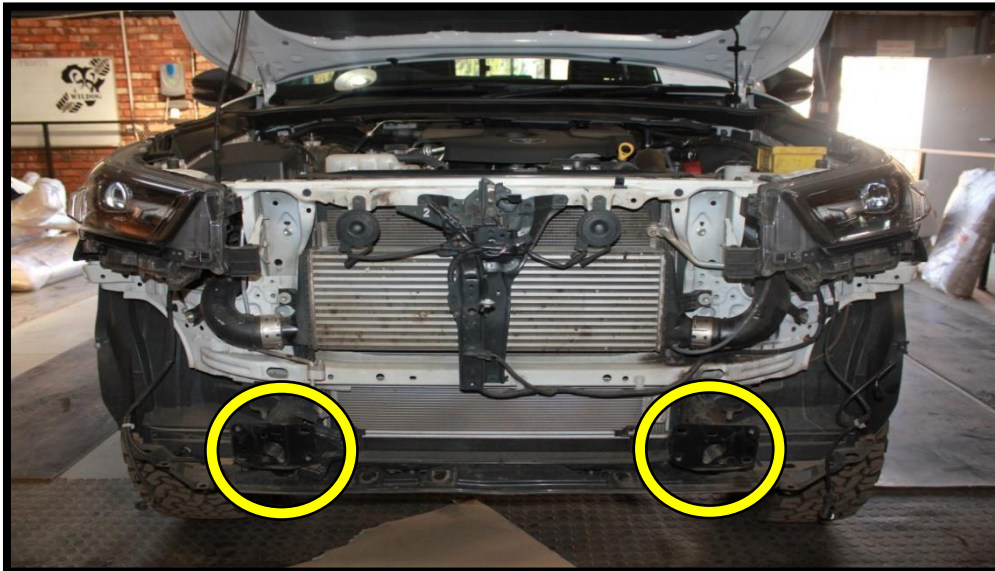
STEP 2

- Remove the air Ducting plastics on both sides of the vehicle.



STEP 3

- Remove the standard chassis stiffener.



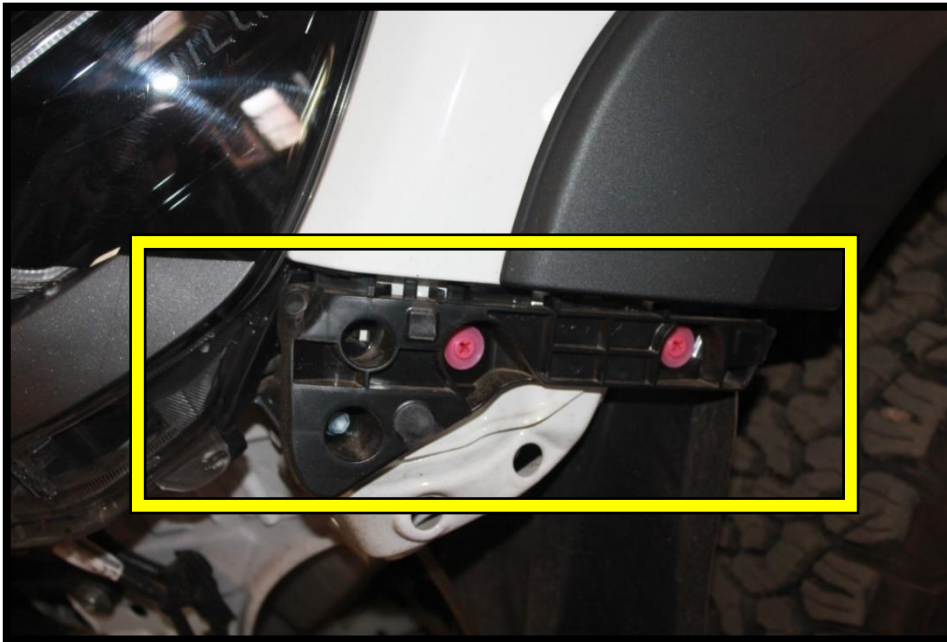


Wildog Accessories

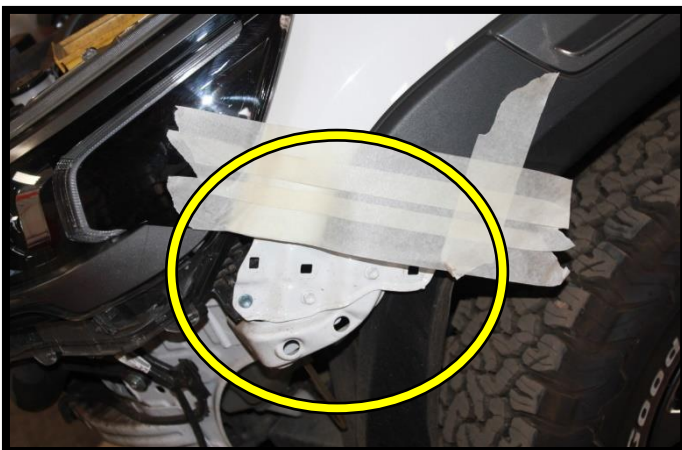
Installation instruction

STEP 4

- Remove the indicated bumper brackets next to the head lights just below the fenders on both sides of the vehicle.



- When removing the bumper brackets as shown above, tape off all edges with masking tape.
- Clean the surface with spirits before spraying.
- Spray the area marked with black spray paint.
- Remove the masking tape after spraying.



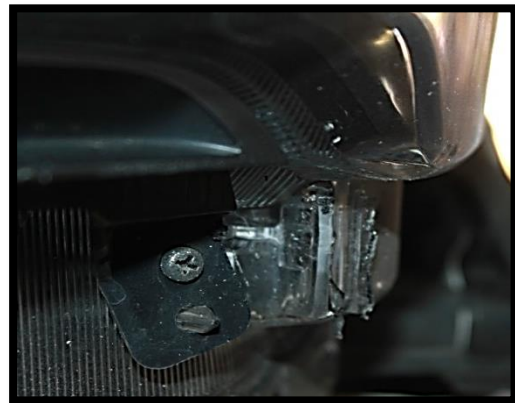
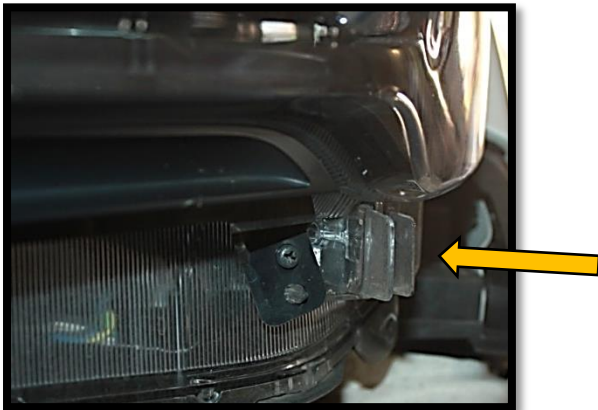
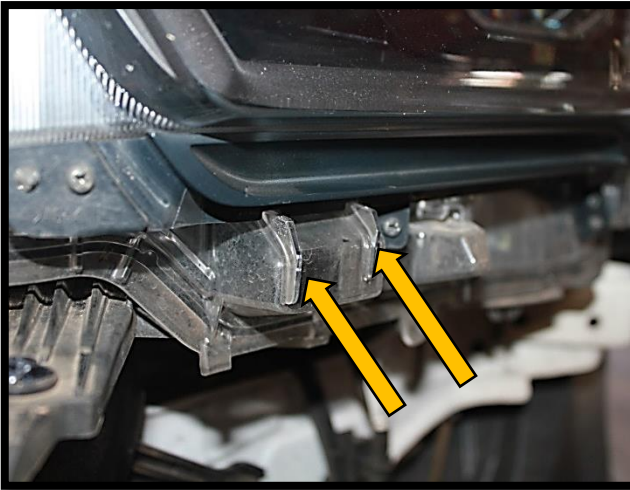


Wildog Accessories

Installation instruction

STEP 5

- There are brackets below the head lights that needs to be cut until it no longer causes an obstruction to the fitment of the bumper as shown on the photos below.



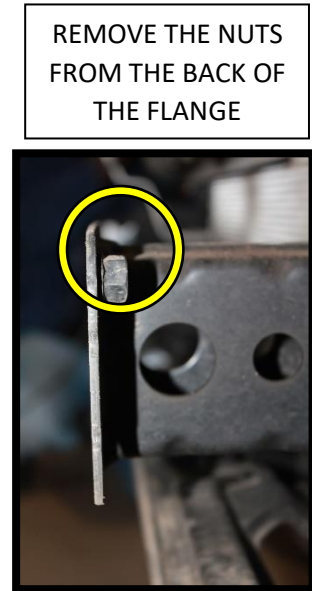
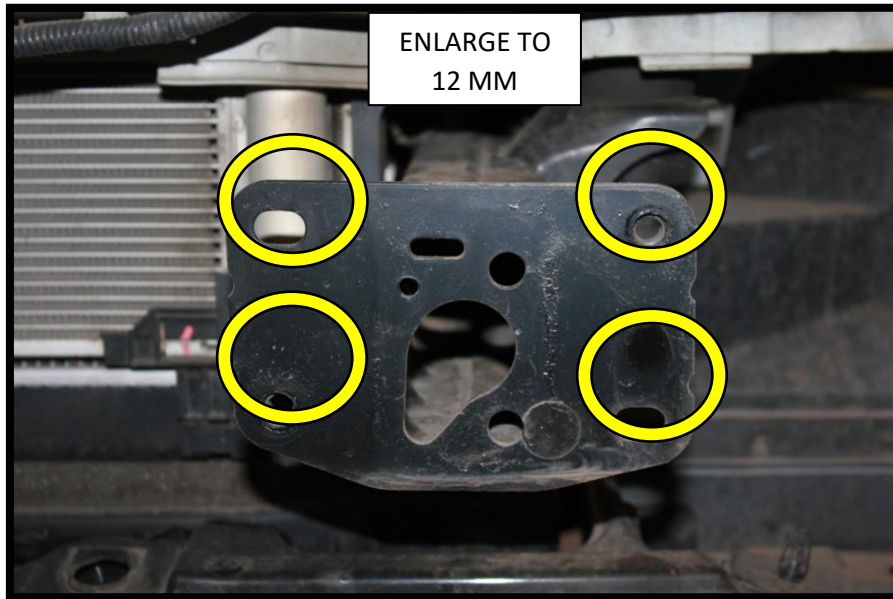
STEP 6

- Remove the nuts at the back of the chassis flange.
- The holes indicated on the chassis flange should be enlarged to 12mm.
- All drilled or cut parts should be coated to prevent corrosion.



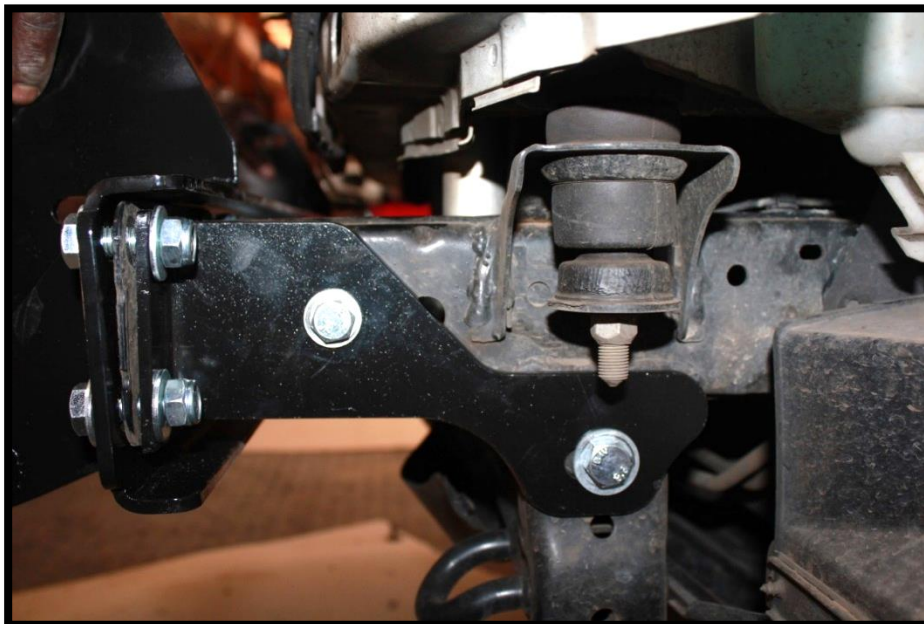
Wildog Accessories

Installation instruction



STEP 7

- Lightly tighten the winch plate and stiffeners supplied to the side and the front of the chassis.





Wildog Accessories

Installation instruction

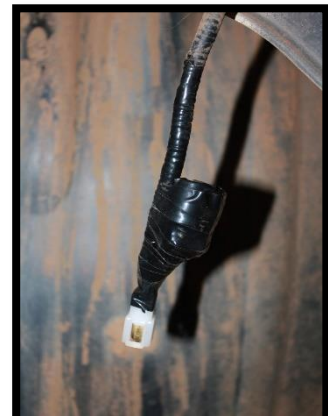
STEP 8

- Ensure that the winch plate's vertical brackets are in alignment and centred with the vehicles chassis before tightening all fasteners.



STEP 9

- Do not cut any wires, or remove the standard OEM light plugs.
- Strip back to small pieces of insulation from the wire and attach the female lugs to the harness.
- Cover and tidy all open wires and loose parts.
- Connect the male lugs to the supplied fogg light and connect to the wiring harness plugs.
- Connect the fog lights to the harness.





Wildog Accessories

Installation instruction

STEP 10

- Torque the chassis mount fasteners to (95 NM).
- Spray and mark each fastener afterwards with a paint marker.
- Ensure that the bumper is not pinching the lights or the fenders when fastening all bolts.
- When the Bumper is aligned drill two (M10) holes for the locking bolts and fasten properly.
- Fasten locking bolts and mark them with a paint marker.



STEP 11

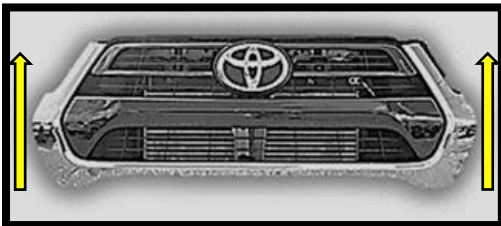
- Cut the inner fender liners evenly with the bumper, and tuck them in neatly behind the bumper.
- Secure liner from the inside with cable ties to secure them in place.
- Fasten the supplied radiator plate to the bottom of the vehicle.





Wildog Accessories

Installation instruction



320mm

320mm



- Measure the grill from top to bottom.
- Make a mark at approximately 320mm on both sides of the grill.
- With masking tape mask off and cut across your line.
- Test fit the grill to the fitted bumper, trim back the grill gradually if still needed.
- Use photos supplied as a reference.

- Please ensure that all parts and fasteners are fitted and tightened before letting the vehicle leave your premises.
- Retention all fasteners after 3 months or 500KM of installation to ensure all parts are still fastened and safe for the client.

Here is too many safe adventures.



Wildog Accessories

Installation instruction

A Warranty form is included with all Wildog Accessories orders placed, please insure that it is completed with every fitment and retention of the bumper if there is no Warranty form completed your 1 year Warranty on the bumper will be voided.



Wildog Accessories (Pty) Ltd

www.wildog.co.za
sales@wildog.co.za
17 Akwamaryn Street
Klerksoord Pretoria

Contact numbers:
0651006252
0742271524

Jobcard

Date:

Fitment Centre Reference:

INSTALLATION AND WARRANTY FORM						
CUSTOMER DETAIL						
Customer Name _____		Address _____		Postal Code _____		
Telephone No _____	Cell Number _____	E Mail Address _____				
DISTRIBUTOR / FITMENT CENTRE DETAIL						
Company Name _____		Address _____		Contact Person _____		
Telephone No _____	Technician Name _____					
VEHICLE DETAIL						
Vehicle Make _____		Model _____		Year _____		
Registration No _____		VIN Number _____		Odo/Speedo Reading _____		
ACCESSORIES FRONT		ACCESSORIES REAR		ACCESSORIES		
Bumper	Yes No	Bumper	Yes No	Bash plate	Yes No	
Winch	Yes No	Spare wheel carrier	None Single Dual	Lower c/arms	Yes No	
PDC's	Yes No	PDC's	Yes No	Transfer c/p	Yes No	
Radar box	Yes No	Towball	Yes No	Rock Sliders	Yes No	
Bolt on towbar	Yes No	Wiring harness	Yes No	Roof rack	Yes No	
Other _____		Other _____		Other _____		
Surface coating _____		Surface coating _____				
INSTALLATION DETAIL			RE-CHECK DETAIL			
Torque checks		NW _____	Torque checks			
Lock bolts		NW _____	Lock bolts			
Rubbers			Rubbers			
Led lights			Led lights			
COMPONENTS FITTED			Fitment Centre			
Front	Winch plate	Yes No	Rear	Spine	Yes No	Technician Name _____
	Stiffners	Yes No		Shell	Yes No	
	Bumper Shell			Resistors	Yes No	Signature : Fitment Centre (At Re-Check)
	Radiator plate	Yes No		Recovery points	Yes No	
	Lights	Yes No		Bumper step	Yes No	
	Resistors	Yes No		Lights	Yes No	
	Other _____			Towball	Yes No	Signature : Customer (At Re-Check)
	Serial # _____			Trailer plug	Yes No	
		Other _____				
		Serial # _____				
CUSTOMER DECLARATION			OTHER			
Signature : Customer (At Fitment)			Signature : Fitment Centre (At Fitment)			
			Signature : Customer (At Re-Check)			
			Copy 1 - Customer copy after 500km Copy 2 - Re-check Copy 3 - Customers Copy at Installation Copy 4 - To be returned to Wildog Acc - Remain in book for Fitment Centre Records			

It is essential to complete this card in full. Return to Wildog accessories via email to validate this warranty. No warranty form, no claim. Warranty will be void if retention is not done